



EUCLID CHEMICAL

ADMIXTURE & FIBER PRODUCTS

LINE CARD





EUCLID CHEMICAL

PROVEN. CONCRETE. SOLUTIONS.

For over 100 years, The Euclid Chemical Company has manufactured top quality products formulated to meet the demands of the ever changing concrete and masonry construction industry. Marketed under the Euco, Eucon, Dural, Speed Crete, Increte, Vandex, Sentinel, Tuf-Strand, PSI Fiberstrand and Tamms brand names, Euclid Chemical serves the global building market as an ISO 9001:2015 supplier of specialty products and support services.

The Euclid Chemical Company philosophy of “demonstratively better” is the foundation upon which Euclid Chemical serves and supports its customers. Cutting edge research and development, technical support and service, and an education-driven specification effort along with ongoing customer training provides Euclid Chemical customers with the best products and support in the industry.




Marketed through a network of over 1,200 distributors, ready-mix concrete producers and masonry suppliers, Euclid Chemical products are recognized as the industry standard throughout the world.

As part of our commitment to helping promote sustainable design, Euclid Chemical has many products which contribute to Leadership in Energy and Environmental Design (LEED™) certification. Yet this commitment does not stop at the manufacturing level. Our employees constantly strive to improve the social and environmental impact of company activities while achieving an economic balance.



THIS LINE CARD IS INTERACTIVE 

Click on a category or product name to visit the corresponding page on www.euclidchemical.com and access all affiliated information and documents including Technical Data Sheets, Safety Data Sheets, and additional literature.

Click on the icons to view product literature:  **S Sell Sheet**  **B Brochure**  **Video**

ADMIXTURES & FIBER PRODUCT OVERVIEW

GENERAL PURPOSE HIGH PERFORMANCE CONCRETE ADMIXTURES

Euclid Chemical High-Performance Admixtures are manufactured meeting the highest industry standards to provide durable and predictable concrete. For decades Euclid Chemical brand name concrete admixtures such as Accelguard, Eucon™ and Plasto™ have been recognized world wide for providing the highest quality concrete solutions for the most basic to the most challenging applications.

- **Air Entraining Admixtures**
(ASTM C260)
- **Water Reducing Admixtures**
(ASTM C494, Type A)
- **Retarding Admixtures**
(ASTM C494, Type B)
- **Accelerating Admixtures**
(ASTM C494, Type C)
- **Water Reducing and Retarding Admixtures**
(ASTM C494, Type D)
- **Water Reducing and Accelerating Admixtures**
(ASTM C494, Type E)
- **High Range Water Reducing Admixtures**
(ASTM C494, Type F)
- **High Range Water Reducing and Retarding Admixtures**
(ASTM C494, Type G)

SPECIALTY CONCRETE ADMIXTURES

Euclid Chemical is a world leader in the continual development of the newest most innovative specialty concrete admixtures to solve the most challenging applications problems faced in the concrete industry. Euclid Chemical Specialty Concrete Admixtures have been developed to provide improved concrete performance in the most unique and stringent applications.

- **Alkali-Silica Reactivity Control Admixtures**
- **Anti-Washout Admixtures**
- **Integral Color**
- **Viscosity Modifying Admixtures**
- **Cement/Hydration Stabilizing Admixtures**
- **Integral Waterproofing Admixtures**
- **Flowable Fill Admixtures**
- **Shrinkage-Reducing Admixtures**
- **Workability Extending Admixtures**
- **Corrosion Inhibiting Admixtures**
- **Shrinkage-Compensating Admixtures**
- **Efflorescence Control Admixtures**
- **Microsilica Admixtures**
- **Strength Enhancing Admixtures**
- **Integral Weatherproofing Admixtures**
- **Integral Finishing Aid Admixtures**
- **Air Detraining Admixtures**

FIBERS

The Euclid Chemical Company is one of the worlds largest leading manufacturers of synthetic fibers for use in fiber reinforced concrete with a full-line of synthetic microfibers, macrofibers and steel fibers.

TUF-STRAND Synthetic Macrofibers are used where an equivalent reinforcing option to steel fibers, wire mesh and light gage reinforcing bars are required in precast concrete, slabs on grade, composite steel decks and shotcrete applications. Appropriate dosages are calculated by determining the engineering requirements of the existing design and providing an equivalent residual strength.

PSI Fiberstrand Synthetic Microfibers are used for plastic shrinkage crack control and are ideally suited to secondary reinforcing applications for slabs and precast concrete. They are available in various sizes and lengths of monofilament and fibrillated polypropylene, monofilament polyester and nylon.

PSI Steel Fibers are used primarily for limited structural applications and temperature and shrinkage crack control in precast concrete, slabs on grade, elevated structures and shotcrete applications. They are available in crimped (blended with or without synthetic microfibers) and hooked-end configurations.

- **TUF-STRAND Synthetic Macrofibers**
- **PSI Fiberstrand Synthetic Microfibers**
- **PSI Steel Fibers**

AIR ENTRAINING ADMIXTURES

Air entraining admixtures are used to create stabilized microscopic air bubbles in concrete, which will improve the durability of concrete when experiencing freezing and thawing weather.

Eucon™ AEA-92

Air Entraining Admixture

Corps of Engineers Specification CRD C-13

ASTM C260

AASHTO M 154

ANSI/NSF STD 61

Eucon™ AEA-92S

Air Entraining Admixture

Corps of Engineers Specification CRD C-13

ASTM C260

AASHTO M 154

ANSI/NSF STD 61

Eucon™ Air MAC 6

Air Entraining Admixture

ASTM C260

AASHTO M 154

ANSI/NSF STD 61

Eucon™ Air MAC 12

Air Entraining Admixture

ASTM C260

AASHTO M 154

ANSI/NSF STD 61

Approved by the Quebec and Ontario

Ministry of Transportation

Eucon™ Air Mix 200

Air Entraining Admixture

ASTM C260

AASHTO M 154

Eucon™ Air Mix 250

Air Entraining Admixture

ASTM C260

AASHTO M 154

Eucon™ Air Mix 200P (Canada Only)

Air Entraining Agent in Powder for Dry Shotcrete and Concrete

Approved by the Quebec Ministry of Transportation

Airex-L™ (Canada Only)

Air Entraining Agent for Concrete

ASTM C260

Approved by the Quebec and Ontario Ministry of Transportation

ACCELERATORS

Set accelerating admixtures are added to shorten the set time of concrete and speed up early strength development.

CHLORIDE

Accelguard® Standard

Accelerating Admixture

ASTM C494, Type C

AASHTO M 194

HUD Minimum Property Standards 4901.1

Section 503.2

New York Board of Standards and Appeals

Calendar No. 714-72SM

Accelguard® HE

Accelerating and Water Reducing Admixture

ASTM C494, Type C&E

AASHTO M 194

NON-CHLORIDE

Accelguard® NCA

Non-Chloride Based Accelerating and Water Reducing Admixture

ASTM C494, Type C&E

AASHTO M 194

ANSI/NSF STD 61

Accelguard® 80

Non-Chloride Based Accelerating and Water Reducing Admixture

ASTM C494, Type C&E

AASHTO M 194

ANSI/NSF STD 61

Accelguard® G3 **S B**

Non-Chloride Based Accelerating and Water Reducing Admixture

ASTM C494, Type C&E

AASHTO M 194

RETARDERS

The Eucon™ series of retarders relieve many of the difficulties involved in placing and finishing concrete in warmer temperatures. Specifically developed for hot weather concreting, our retarders delay the setting time and improve the hardened properties of concrete.

Eucon™ Retarder 75

Set Retarding and Water Reducing Admixture

ASTM C494, Type B&D

AASHTO M 194

ANSI/NSF STD 61

Eucon™ Retarder 100

Set Retarding, Water Reducing Admixture and Extended Set Control Admixture

ASTM C494, Type B&D

AASHTO M 194

CSA Standard CAN3 A266.2-M78

Eucon™ NR

Set Retarding and Water Reducing Admixture

ASTM C494, Type A&D

AASHTO M 194

Eucon™ LR

Set Retarding and Water Reducing Admixture

ASTM C494, Type A&D

AASHTO M 194

Eucon™ 727 (Canada Only)

Set Retarding and Water Reducing Admixture

Approved by the Quebec and Ontario Ministry of Transportation

WATER REDUCING ADMIXTURES

Water Reducing Admixtures reduce water demand by 5 to 10%. They are used to create longer lasting, better workability and increased slump retention and typically result in higher strength concrete with more durability.

Eucon™ WR

Water Reducing Admixture

ASTM C494, Type A&D

AASHTO M 194

Eucon™ WR 91

Water Reducing and Set Retarding Admixture

ASTM C494, Type A&D

AASHTO M 194

ANSI/NSF STD 61

Eucon™ NW

Water Reducing Admixture

ASTM C494, Type A&D

AASHTO M 194

Eucon™ WRX

Water Reducing and Set Retarding Admixture

ASTM C494, Type A&D

AASHTO M 194

Eucon™ SE S

Water Reducing and Set Retarding Admixture

ASTM C494, Type A&D

AASHTO M 194

Eucon™ NR

Water Reducing and Set Retarding Admixture

ASTM C494, Type A&D

AASHTO M 194

Eucon™ WR 75

Water Reducing and Set Retarding Admixture

ASTM C494, Type A&D

AASHTO M 194

Eucon™ A+

Water Reducing Admixture

ASTM C494, Type A

AASHTO M 194

Eucon™ DX (Canada Only)

Water Reducing Admixture

ASTM C494, Type A

Approved by the Quebec Ministry of Transportation

MID-RANGE WATER REDUCING ADMIXTURES

Mid-Range Water Reducing Admixtures are used to reduce water demand by 5 to 15%, providing outstanding strength gain and enhanced finishability and give greater workability without excessive set retardation to concrete than normal range water reducing admixtures.

Eucon™ MR

Mid-Range Water Reducing Admixture
ASTM C494, Type A&F
AASHTO M 194
ANSI/NSF STD 61

Eucon™ MRX

Mid-Range Water Reducing Admixture
ASTM C494, Type A&F
AASHTO M 194

Eucon™ X15

Mid-Range Water Reducing Admixture
ASTM C494, Type A&F
AASHTO M 194
ANSI/NSF STD 61

Eucon™ X20

Mid-Range Water Reducing Admixture
ASTM C494, Type A&F
AASHTO M 194

Plastol™ 341

Mid-Range/High-Range Water Reducing Admixture
ASTM C494, Type A&F
AASHTO M 194

Plastol™ 6420 S

Mid-Range/High-Range Water Reducing Admixture
ASTM C494, Type A&F
AASHTO M 194
ANSI/NSF STD 61

Plastol™ RX10

Mid-Range/High-Range Water Reducing Admixture
ASTM C494, Type A&F
AASHTO M 194

HIGH-RANGE WATER REDUCING ADMIXTURES

High-Range Water Reducing Admixtures are used to reduce water demand by 12 to 45%. High-range water reducers aid in lowering water/cement ratios and increasing slump to produce flowable and self-consolidating concrete. These products offer high early strengths and the enhanced workability and pumpability needed in today's competitive concrete construction market.

Eucon™ 37

High-Range Water Reducing Admixture
ASTM C494, Type A&F
AASHTO M 194
ASTM C1071, Type I

Eucon™ 537

High-Range Water Reducing Admixture
ASTM C494, Type G
AASHTO M 194

Eucon™ 1037

High-Range Water Reducing Admixture
ASTM C494, Type A&F
AASHTO M 194
ANSI/NSF STD 61

PLASTOL 341

Mid-Range/High-Range Water Reducing Admixture
ASTM C494, Type A&F
AASHTO M 194

Plastol™ 5000

High-Range Water Reducing Admixture
ASTM C494, Type A&F
AASHTO M 194
ASTM C1071, Type I

Plastol™ 5000 SCC (Canada Only)

High-Range Water Reducing Admixture
ASTM C494, Type A&F
ASTM C1071, Type I
Approved by the Quebec and Ontario Ministry of Transportation

Plastol™ 6400

High-Range Water Reducing Admixture
ASTM C494, Type A&F
AASHTO M 194
ANSI/NSF STD 61
ASTM C1071, Type I

Plastol™ 6200EXT S

Extended Workability Mid-Range/High-Range Water Reducing Admixture
ASTM C494, Type A&F
AASHTO M 194
ASTM C1071, Type I

Plastol™ 6425

High-Range Water Reducing Admixture
ASTM C494, Type A&F
AASHTO M 194
ASTM C1071, Type I

Plastol™ 6420 S

Mid-Range/High-Range Water Reducing Admixture
ASTM C494, Type A&F
AASHTO M 194
ASTM C1071, Type I
ANSI/NSF STD 61

Plastol™ SPC

High-Range Water Reducing Admixture
ASTM C494, Type A&F
AASHTO M 194

Plastol™ Ultra 209

High-Range Water Reducing Admixture
ASTM C494, Type A&F
AASHTO M 194

SPECIALTY ADMIXTURES B

Euclid Chemical provides a range of specialty concrete admixtures and additives to help produce, place and finish concrete required to meet unique, high performance requirements.

Eucon™ Air-Down

Dry powdered defoaming admixture
ASTM C494, Type S

Eucon™ Air Out

Liquid based air detraining admixture
ASTM C494, Type S

Eucon™ Integral Arc

Alkali Silica Reactivity Control Admixture
ASTM C494, Type S

Eucon™ BCN

Calcium Nitrite based corrosion inhibitor
ASTM C494, Type C&E
ASTM C1582
AASHTO M 194, Type C
Corps of Engineers Classification CRD C87, Type C

Eucon™ CIA

Calcium Nitrite based corrosion inhibitor
ASTM C494, Type C&E
ASTM C1582
AASHTO M 194, Type C
Corps of Engineers Classification CRD C87, Type C
ANSI/NSF 61

Eucon™ Easy Fill

Flowable Fill Admixture

Eucon™ DS

Cement Hydration Stabilizer and Set Retarding Admixture
ASTM C494, Type B&D

Eucon™ Stasis

Cement Hydration Stabilizer and Set Retarding Admixture
ASTM C494, Type B&D
ANSI/NSF STD 61

Eucon™ W.O.

Cement Hydration Stabilizer and Set Retarding Admixture
ASTM C494, Type B&D

Eucoshield™ S

Integral Finishing Aid
ASTM C494, Type S

Eucon™ MSA S

Powdered, Densified Microsilica Admixture
ASTM C1240

Eucon™ AWA

Anti-washout Admixture
ASTM C494, Type S

Eucon™ AWA-P20

Anti-washout/Rheology Modifying Admixture
ASTM C494, Type S
Corps of Engineers CRD-C661, Specification for Anti-washout Admixtures for Concrete

Vistrol™

Viscosity Modifying Admixture
ASTM C494, Type S

Conex® S

Shrinkage Compensating Admixture
ASTM C494, Type S
ANSI/NSF 61

Conex® NF (Canada Only)

Shrinkage Compensating Admixture
ASTM C494, Type S

Eucon™ SRA Floor

Shrinkage Reducing Admixture for Interior Floor Applications
ASTM C494, Type S
AASHTO M 194

Eucon™ SRA-XT

Shrinkage Reducing Admixture for Exterior Concrete Applications
ASTM C494, Type S
AASHTO M 194

Eucon™ Eco-Strength S

Strength Enhancing Admixture
ASTM C494, Type S

Eucon™ Vandex™ AM-10 S

Powdered Integral Crystalline Waterproofing Admixture
ASTM C494, Type S
ANSI/NSF STD 61

Eucon™ Vandex™ AM-10L

Liquid Integral Crystalline Waterproofing Admixture
ASTM C494, Type S
ANSI/NSF STD 61

Eucon™ Baracade WPT S

Integral Water Repellent
ASTM C494, Type S

Plastol™ AMP-X³ S

Extended Workability Admixture
ASTM C494, Type S

Eucon™ R3A

Returned Concrete Treatment

Euco® Dust-Down

Roadway Dust Control Agent

POWDERED ADMIXTURES

Powdered Admixtures that come in dissolvable bags for convenient mixing.

Eucon™ Flow-Max

Powdered, High-Range Water Reducing Admixture
ASTM C494, Type F

Eucon™ Set-Stop

Powdered, Set Stabilizing Admixture
ASTM C494, Type D

Euco® THX

Admixture for High Strength, Non-Shrink Grouts
ASTM C937

Eucon™ DSM (Canada only)

Powdered Accelerating Admixture

Eucon™ 37 "P"

Powdered, High-Range Water Reducing Admixture
ASTM C494, Type A&F
AASHTO M 194
ACI 201
ACI 318 Minimal Chloride Content

INTEGRAL CONCRETE COLOR ADMIXTURES

Integral pigment admixtures offering an unlimited palette of hues and shades to change the color of any cementitious material.

Increte Color-Crete™ 7 for 28

Powdered concentrated color admixture available in 7 standard pigments that can produce 28 different shades by varying the number of bags per cubic yard (cubic meter) of concrete

ASTM C979, ACI 303.1

Increte Color-Crete™ Granular

Synthetic iron oxide pigments in granule form for easy flow and low dusting

ASTM C979, ACI 303.1

Increte Color-Crete™ Liquid

Specially-blended, inorganic pigments dispersed in water and are designed for use with INCRETE COLOR-MATIC integral-color-dispensing machines

ASTM C979, ACI 303.1

MASONRY/MCP ADMIXTURES B

Masonry and MCP Admixtures improve the production efficiency, performance, and visual appeal of machine-made concrete products. They are engineered to meet the needs of the block, paver, roof tile, hollow core slab and dry-cast pipe producers.

Eucon™ Blocktite B

Traditional water repellent/secondary efflorescence control admixture

Eucon™ For-Cast™ S

Plasticizing Admixture for Manufactured Concrete Products

Eucon™ Hydrapel™ 2.0

Multi-benefit efflorescence control admixture

Eucon™ For-Cast™ N

Plasticizing Admixture for Manufactured Concrete Products

Eucon™ For-Cast™ SC

Plasticizing Admixture for Manufactured Concrete Products

Eucon™ Hydrapel™ 2.5

Multi-benefit efflorescence control admixture

Eucon™ For-Cast™ RM

Rheology Modifying Admixture for Low Slump Concrete

Eucon™ For-Cast™ SD

Plasticizing Admixture for Manufactured Concrete Products

Eucon™ Pavertite

General use admixture for paver, SRW, cast stone and roof tile production

MORTAR ADMIXTURES

Mortar Admixtures modify the plastic and/or hardened properties of masonry mortar, stucco, and similar materials.

Accelguard® 80 (Mortar)

Non-chloride accelerator for mortar

ASTM C494, Type E

Euco® Winter Admixture

Powdered Masonry Mortar Accelerator

ASTM C494, Type C

Hydrapel™ Mortar Admixture

Integral water repellent admixture for mortar

Blocktite™ Mortar Admixture

Water repellent admixture that also controls efflorescence in masonry mortar

Eucon™ Retarder 100M

Workability Extending and Retarding Admixture for Mortar

ASTM C1384

Integral Waterpeller

Water Repellent Admixture for Concrete and Mortar

SHOTCRETE ACCELERATORS

Ready to use bagged shotcrete and liquid admixtures for use in dry shotcrete and wet shotcrete applications.

Eucon™ Sureshot™

High Performance Shotcrete Coagulant

ASTM C1141

Eucon™ Sureshot™ AF (Canada only)

High Performance Alkali-Free Shotcrete Accelerator

ASTM C1141

Eucon™ Sureshot™ AF2LV

High Performance Alkali-Free Shotcrete Accelerator

ASTM C1141

FIBERS B

Fiber reinforcement is used in concrete to improve many properties, including durability, cracking, toughness and abrasion. Macrofibers can also be used for the replacement of steel reinforcement in many applications.

SYNTHETIC MACROFIBERS

Tuf-Strand™ SF

Synthetic macrofiber designed to increase toughness and provide long-term durability, replacing steel fibers, welded wire mesh, and conventional reinforcing bars.

ASTM C1116, ASTM C1609, ASTM D7508, ICC AC383 (ESR4072), ULIULC (CBXQ.R13773)

Tuf-Strand™ MaxTen

Synthetic macrofiber used as an alternate to steel fibers and light welded wire mesh in a variety of secondary reinforcement applications.

ASTM C1116, ASTM C1609, ASTM D7508, ICC Acceptance Criteria AC32

Tuf-Strand™ SuperMix 31

Macro/micro synthetic fiber blend successfully used as an alternative to steel fibers and welded wire mesh in a wide variety of secondary reinforcement applications.

ASTM C1116, ASTM C1609, ASTM D7508, Caltrans Bridge Deck Specification in Section 90 and Section 51, NDOT Bridge Deck Specification Section 501

Tuf-Strand™ SuperMix 41

Macro/micro synthetic fiber blend successfully used as an alternative to steel fibers and welded wire mesh in a wide variety of secondary reinforcement applications.

ASTM C1116, ASTM C1609, ASTM D7508, Caltrans Vegetation Control Specification: Section 83

Tuf-Strand™ SuperMix 41F

Macro/micro synthetic fiber blend successfully used as an alternative to steel fibers and welded wire mesh in a wide variety of secondary reinforcement applications.

ASTM C1116, ASTM C1609, ASTM D7508, UDOT Concrete Specification Section 03055M

Tuf-Strand™ MaxTen SuperMix

Macro/micro synthetic fiber blend successfully used as an alternate to steel fibers and welded wire mesh in a wide variety of secondary reinforcement applications.

ASTM C1116, ASTM C1609, ASTM D7508

SYNTHETIC MICROFIBER

PSI™ Fiberstrand™ Repreve 225

Monofilament synthetic microfiber made of sustainably resourced polyester designed to help mitigate plastic shrinkage cracks.

ASTM C1116, ASTM C1579, ASTM D7508

PSI™ Fiberstrand™ 150

Monofilament polypropylene microfiber designed to mitigate plastic shrinkage cracks.

ASTM C1116, ASTM C1579, ASTM D7508

PSI™ Fiberstrand™ Multi-Mix 80

Fine denier monofilament polypropylene microfiber designed to mitigate plastic shrinkage cracks.

ASTM C1116, ASTM C1579, ASTM D7508

PSI™ Fiberstrand™ F

Fibrillated polypropylene microfiber designed to mitigate plastic shrinkage cracks.

ASTM C1116, ASTM C1579, ASTM D7508

PSI™ Fiberstrand™ N

Monofilament nylon microfiber designed to mitigate plastic shrinkage cracks.

ASTM C1116, ASTM C1579, ASTM D7508

PSI™ Fiberstrand™ ProMicro

Fine denier monofilament polypropylene microfiber designed to provide anti-spalling for fire protection in concrete structures.

ASTM C1116, ASTM D7508, ISO 834

STEEL FIBERS

PSI™ Steel Fiber C6560

Hooked-end steel macrofiber designed to provide concrete with temperature and shrinkage crack control, enhanced flexural reinforcement, improved shear strength and increase crack resistance of concrete.

ASTM C1116, ASTM A820, Type I/IV

PSI™ Crimped Steel Fiber

Crimped steel macrofiber designed to provide concrete with temperature and shrinkage crack control, enhanced flexural reinforcement, improved shear strength and increase the crack resistance of concrete.

ASTM C1116, ASTM A820, Type I/IV

PSI™ Crimped Steel Fiber FB

Crimped steel macrofiber with fibrillated polypropylene synthetic microfibers, designed to provide concrete with plastic, temperature, and shrinkage crack control.

ASTM C1116, ASTM A820

PSI™ Crimped Steel Fiber MB

Crimped steel fiber blended with monofilament polypropylene synthetic microfibers, designed to provide concrete with plastic, temperature, and shrinkage crack control.

ASTM C1116, ASTM A820, Type I/IV



MORE PRODUCT LITERATURE

THIS LINE CARD IS INTERACTIVE

Click on a piece of literature to view the full version on www.euclidchemical.com.

752HP™ FLOOR SYSTEM

TYPICAL APPLICATIONS:

- Manufacturing
- Warehousing
- Food processing
- Automotive
- Food and Beverage Processing

THE OBJECTIVE AND THE GOAL:

Build a clean, durable, and easy-to-maintain floor system that meets the needs of your facility and provides long-term value.

KEY FEATURES & BENEFITS:

- Highly durable and long-lasting
- Easy to clean and maintain
- Resistant to impact and abrasion
- Chemically resistant
- Low maintenance
- Long life expectancy
- Cost-effective

SS85 752 HP Floor System

EXTENDED SLUMP TECHNOLOGY

WHEN SHOULD YOU USE IT?

- When you need a concrete mix that can be placed and finished in a wide range of conditions.
- When you need a concrete mix that can be placed and finished in a wide range of conditions.

WHY SHOULD YOU USE IT?

- It allows for a longer workability window.
- It reduces the risk of segregation and bleeding.
- It improves the overall quality of the concrete.

SS99 Extended Slump Technology

NSF/ANSI STANDARD 61 CERTIFIED PRODUCTS

WHAT IS NSF/ANSI STANDARD 61?

NSF/ANSI Standard 61 is a set of performance criteria for drinking water treatment products that are used in residential, commercial, and institutional settings.

WHY SHOULD YOU USE IT?

- It ensures that the products are safe for drinking water.
- It provides a level of assurance that the products meet the highest standards of performance.

SS111 NSF/ANSI Standard 61 Certified Products

ADMIXTURE DISPENSER SYSTEMS AND SERVICE

DEPENDABLE, LOW-MAINTENANCE ADMIXTURE DISPENSER SYSTEMS

Our admixture dispenser systems are designed to provide accurate, consistent dosing of admixtures into concrete mixtures.

TRADITIONAL AND CUSTOM DISPENSER AVAILABILITY

We offer a wide range of dispenser options to meet the needs of your specific application.

SS117 Admixture Dispenser System & Service

PERVIOUS CONCRETE

THE DIFFERENCE:

Pervious concrete allows water to pass through the concrete, reducing runoff and recharging groundwater.

PRIMARY APPLICATIONS:

- Stormwater management
- Urban drainage
- Landfill leachate collection

FILTRATION:

The voids in pervious concrete act as a natural filter, trapping sediment and pollutants.

SS123 Pervious Concrete Guide

TUNNELING SOLUTIONS

CONCRETE ADMIXTURES:

- PRECAST CONCRETE ADMIXTURES
- BACKFILL ADMIXTURES
- SPHONDRITE ADMIXTURES

RESIN PRODUCTS:

- CHEMICAL GROUTING PRODUCTS
- ULTRA-MICRO FINE CEMENTS

B104 Tunneling

WATERPROOFING SOLUTIONS

WATERPROOFING COATINGS:

- URETHANE GROUTS
- CONCRETE REPAIR MATERIALS
- HIGH PERFORMANCE ADMIXTURES
- CHEMICAL RESISTANT COATINGS & LINERS

B109 Waterproofing

MEASUREMENT CONVERSIONS

If You Have	Multiply By	To Find
inches	25.4	millimeters
inches	2.54	centimeters
inches	0.0254	meters
in ²	6,642	cm ²
in ²	0.00694	ft ²
in ³	.554	fl oz
in ³	0.01639	liters
in ³	0.004329	gallons US
in ³	16.39	cm ³
in ³	0.00058	ft ³
ft ²	144	in ²
ft ²	9,729.03	cm ²
ft ² /gal	0.02454	m ² /liter
ft ³	1,728	in ³
ft ³	0.02832	m ³
ft ³	0.037	yd ³
yard	0.9144	meter
yd ²	0.8361	m ²
yd ³	27	ft ³
yd ³	0.7646	m ³
acres	43,560	ft ²
floz	1,805	in ³
floz	0.03215	quart
floz	0.00781	gallons US
floz	0.02957	liter
floz/cwt	0.652	ml/kg
floz/cwt	65.2	ml/100 kg
floz/cwt	0.03868	l/m ³
quart	32	fl oz
quart	0.25	gallons US
gallon US	231	in ³
gallon US	4	quarts
gallon US	128	fl oz
gallon US	3.785	liter
gal/yd ³	4.951	liter/m ³
lb	0.0005	ton US
lb	453.5924	g
lb	0.4536	kg
lb/ft ²	4.88	kg/m
lb/ft ³	16.02	kg/m ³
lb/yd ³	0.5933	kg/m ³
psi	0.006895	MPa
w/c ratio	11.3	gal water/ bag of cement
gal water/ bag of cement	0.0885	w/c ratio
g	0.0022	lbs
g	0.001	kg

If You Have	Multiply By	To Find
liters	61.024	in ³
mils	0.001	inches
millimeters	0.0394	inches
centimeters	0.3937	inches
cm ²	0.155	in ²
meters	39.37	inches
cm ²	0.155	in ²
cm ³	0.06102	in ³
cm ²	0.00108	ft ²
m ² /liter	40.75	ft ² /gal
m ³	35.314	ft ³
meter	1.0936	yard
m ²	1.196	yd ²
m ³	1.308	yd ³
liter	33.8141	fl oz
ml/kg	1.533	fl oz/cwt
ml/100kg	0.0153	fl oz/cwt
l/m ³	25.85	fl oz/yd ³
liter	0.264	gallon US
liter/m ³	0.202	gal/yd ³
g	0.0022	lb
kg	2.205	lb
kg/m ³	0.0624	lb/ft ³
kg/m ³	1.685	lb/yd ³
kg/m ³	0.2048	lb/ft ²
kg	1,000	g
Mpa	145	psi

TEMPERATURE CONVERSIONS

$$\begin{array}{l|l} \text{°C} = (\text{°F}-32) / 1.8 & 32\text{°F} = 0\text{°C} \\ \text{°F} = (1.8 \times \text{°C}) + 32 & 212\text{°F} = 100\text{°C} \end{array}$$

WATER

Water weighs 8.345 lbs/gallon.
One cubic foot weighs 62.45 lbs.
One lb = 27.7 in³ = 0.1198 gallons.

SAND

One yd³ of bulk sand weighs about 2,700 lbs.
One ft³ of bulk sand weighs about 100 lbs.
One gallon of bulk sand weighs about 13-14 lbs.
The specific gravity of sand is approximately 2.6.

FLOOR SYSTEM THICKNESS

Inches	Mils	Millimeters
2	2000	50.8
1-1/2	1500	38.1
1	1000	25.4
3/4	750	19.05
1/2	500	12.7
3/8	375	9.52
5/16	312.5	7.94
1/4	250	6.35
3/16	187.5	4.76
1/8	125	3.175
3/32	93.8	2.38
1/16	62.5	1.59

VOLUME AND AREA FORMULAS

Area of a square or rectangle = Length x Width

Circumference of a circle = Diameter x 3.14

Area of a circle = Radius x Radius x 3.14

Absolute volume = Specific Gravity x 62.4

Surface area of cylinder = Diameter x Length x 3.14

DECIMAL EQUIVALENTS OF COMMON MEASUREMENTS

1/16 = .0625	1/2 = .5
1/8 = .125	9/16 = .5625
3/16 = .1875	5/8 = .625
1/4 = .25	11/16 = .6875
5/16 = .3125	3/4 = .75
3/8 = .375	13/16 = .8125
7/16 = .4375	7/8 = .875
	15/16 = .9375

ASTM C-494 CLASSIFICATIONS

TYPE A Water Reducing

TYPE B Retarding

TYPE C Accelerating

TYPE D Water Reducing and Retarding

TYPE E Water Reducing and Accelerating

TYPE F High-Range Water Reducing

TYPE G High-Range Water Reducing and Retarding

TYPE S Specific Performance

COVERAGE YIELD OF ONE YARD OF CONCRETE

Thickness (inches)	Square Feet	Thickness (inches)	Square Feet	Thickness (millimeters)	Square Meters	Thickness (millimeters)	Square Meters
1	324	6	54	25	40	125	8
2	162	7	46	50	20	150	6.67
3	108	8	40	75	13.33	175	5.71
4	81	9	36	100	10	200	5
5	65	10	32				

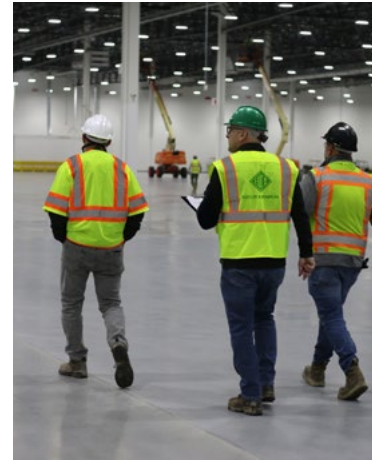
$$\text{ft}^2/\text{yd} = 324/\text{depth (inches)}$$

AN INDUSTRY LEADER

SALES & TECHNICAL SUPPORT

Since 1910, Euclid Chemical has provided a unique combination of superior products, unparalleled customer service and industry support with a range of value-added resources to concrete producers, architects, engineers, designers, contractors and owners.

- Over 120 experienced field sales and service representatives in North America
- Field team supported by dedicated product managers and field technical specialists
- Product & technology training programs
- Seminars featuring AIA certified programs
- Specification review & update service
- Design & installation consultation/ professional engineering staff
- Real-time technical support on products and applications



LABORATORY SERVICES & PRODUCT DEVELOPMENT

Our world-class **Cement and Concrete Reference Laboratory (CCRL)** is equipped with state-of-the-art technologies and is staffed by ACI certified technicians. Our product testing program conforms to accepted standards of ASTM, the U.S. Army Corps of Engineers, ACI and ICRI.

- Research & development
- Petrography, forensics
- Material analysis
- Concrete testing
- Mix design development
- Technical support requests

QUALITY

Euclid Chemical products are manufactured under the stringent standards of our **ISO 9001:2015 certification**.

- Company-wide quality assurance: manufacturing, design, purchasing, distribution & management
- Continuous improvement



EUCLID CHEMICAL

The Euclid Chemical Company

19215 Redwood Road • Cleveland, OH 44110 • 800-321-7628

www.euclidchemical.com