



EUCLID CHEMICAL

CONCRETE SURFACE RETARDER

INCRETE EZ EXPOSE



APPLICATIONS

- Integrally-colored concrete
- Decorative exposed aggregate
- Micro-etch, sandblast effect
- Large exposed stone
- Embedded exposed crushed shell
- Flatwork or precast concrete

PRODUCT SUPPORT

- Specification assistance
- CAD details
- Design consultation
- Color selection assistance
- R&D laboratories
- Applied samples
- Engineered-systems approach

INCRETE EZ EXPOSE is a water-based, concrete surface retarder designed to create exposed-aggregate finishes with consistency and ease. INCRETE EZ EXPOSE is formulated in six grades that result in different etch levels from a fine sandblast up to a full 1 in (2.5 cm) depth that will expose larger decorative stone. For best results, all grades are slightly colored so that application can be monitored visually to assure even and total coverage.

This product has another formulation for application directly to forms, called **INCRETE EZ EXPOSE F**. INCRETE EZ EXPOSE F is available in 4 grades.

CUSTOMER SUPPORT

- **Technical Support** – Available for product selection and application questions.
- **Product Assistance** – Locate a contractor or distributor. Support literature and in-depth written application instructions.
- **Field Specialists** – Trained field specialists provide consultations and recommendations.
- **Design Consultation** – Complete with showroom and training facility.
- **Seminars** – 2-day seminars include classroom instruction on project estimation and marketing and sales tactics to grow your business all year long with hands-on product training (also available in Spanish). On-site distributor training and webinars by request are also available.
- **Trade shows** – Industry events, expos and conferences offering industry-related instruction.



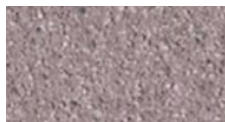
EUCLID CHEMICAL

CONCRETE SURFACE RETARDER

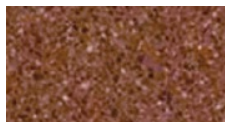
INCRETE EZ EXPOSE

EXPOSURE LEVELS

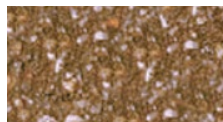
Six different grades provide consistent results to meet desired levels of aggregate exposure (Not Pictured: EZ Expose 75 and EZ Expose 125).



EZ Expose 5



EX Expose 25



EZ Expose 100



EZ Expose 200

COLOR COMBINATIONS

35 standard integral colors can be utilized to pre-color concrete, offering limitless design possibilities.



Sandstone CC730/3



Pecos Beige CC550/3



Fiesta CC320/3



San Jose Buff CC715/1.5



Austin Buff CC047/1



Phoenix Tan CC575/1



Sand Buff CC725/2



Desert Tan CC275/4



Autumn Brown CC050/5



Cocoa CC177/6



Yuma Gold CC990/2



Sombra CC805/3



Maplewood CC460/3



Saltillo CC705/2



Terra Cotta CC875/4



Tile Red CC895/3



Brick Red CC100/4



Tahoe Red CC850/5



Cherokee Red CC153/5



Redwood CC630/6



Navajo CC510/2



Cordova CC200/4



Sedona CC750/2



Tierra CC885/2



Pueblo CC595/4



Soft Gray CC802/5



Silver Gray CC770/1



Euro Gray CC285/3



Dark Gray CC230/4



Charcoal CC150/6

Sun Buff CC840/6
Requires White PigmentPewter CC560/4
Requires White PigmentEuro Slate CC290/3
Requires Green PigmentSlate CC785/3
Requires Green PigmentPhilly Blue CC570/5
Requires Blue Pigment

NOTE: This printed color chart is for reference purposes only. Euclid Chemical recommends choosing colors from actual test samples.

SS04 © 2025