



INCRETE COLOR-CRETE MORTAR COLORS



APPLICATIONS

- Mortars and Stucco
- Brick and Colored Block
- Natural Stone
- Vertical and Horizontal
- Interior or Exterior
- Ceramic or Porcelain Tile

FEATURES AND BENEFITS

- Premeasured
- Easy to Use
- UV and Weather Safe
- High Tint Strength
- Custom Color Services
- Meets ASTM C-979

PRODUCT SUPPORT

- Specification Assistance
- CAD Details
- Design Consultation
- Color Selection Assistance
- R&D Laboratories
- Applied Samples

INCRETE COLOR-CRETE MORTAR COLORS by Euclid Chemical transforms plain gray mortar joints into workable artistic materials that increase design options, enhance the beauty, and increase the value of your project.

Mortar covers up to 1/5 of a masonry surface and therefore has a huge visual impact. INCRETE COLOR-CRETE MORTARS can add stunning highlights or soothing shades to the overall appearance, resulting in inspiring works of art.

Perfect for use with brick, stone, block, or tile, these colors are premeasured for ease of use and consistent results. Manufactured with the highest grade in raw materials, INCRETE COLOR-CRETE MORTAR COLORS meet or exceed ASTM C-979 standards including high tint strength and permanent color fastness that is UV, alkaline, and weather stable.

Available in 12 standard colors with custom colors and color matching services available. INCRETE COLOR-CRETE MORTAR COLORS are packaged in ready-to-use 2 lb units and mix with most cementitious mortars and grouts.

CUSTOMER SUPPORT

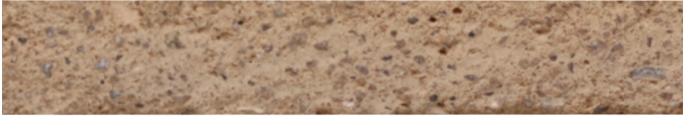
- Technical support available for product selection, application questions.
- Distributor and contractor sourcing
- Trained regional field specialists
- Showroom and training facility
- 2-day seminars (available in Spanish). On-site distributor training and webinars by request are also available.



INCRETE COLOR-CRETE MORTAR COLORS

COLOR SELECTION

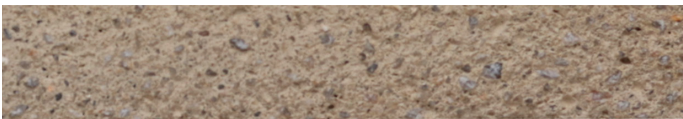
Available in 12 standard colors with custom colors and color matching services.



Fiesta



San Jose Buff



Sand Buff



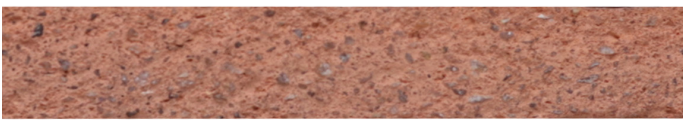
Austin Buff



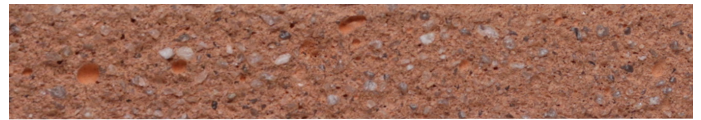
Cocoa



Autumn Brown



Terra Cotta



Yuma Gold



Redwood



Brick Red



Pueblo



Deep Charcoal

NOTE: All colors shown on this chart are represented as close as possible. Upon installation, variations can be expected due to differences in base mortar colors, cement, aggregates, method of mixing and application, weather, light sources, etc. This printed color chart is for reference purposes only. Euclid Chemical recommends choosing colors from actual test samples made with the same mortar (or weight equivalent of Portland and lime) and same conditions expected on the project.