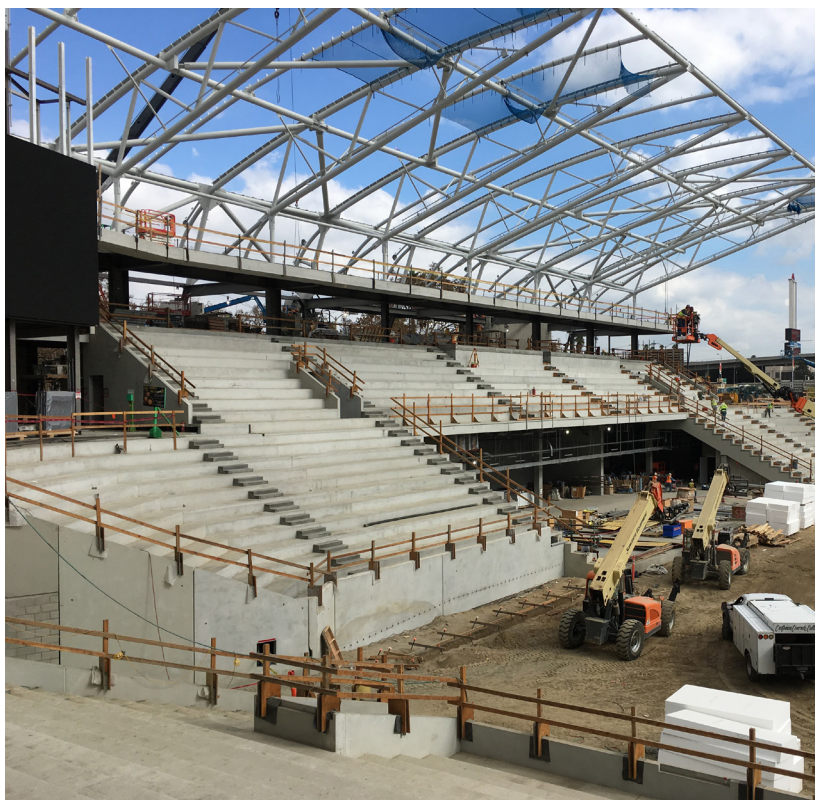




PROJECT PROFILE

LOS ANGELES FOOTBALL CLUB BANC OF CALIFORNIA STADIUM



PROJECT DATA

Location – Los Angeles, CA
Application – Fiber reinforcement topping slab
Engineer – Thornton Tomasetti
Architect – Gensler
General Contractor – PCL Construction
Concrete Contractor – Bomel Construction Company Inc.
Ready Mix Producer – National Ready Mix

PRODUCTS FEATURED

Tuf-Strand MaxTen
Macro-synthetic fiber used as an alternate to welded wire mesh

SCOPE OF PROJECT

Macro-synthetic fiber reinforcement for topping slab



PROJECT SUMMARY

Banc of California Stadium, completed in 2018, is home for the Los Angeles Football Club (LAFC), one of Major League Soccer's latest expansion teams. This 22,000-seat state-of-the-art facility is located in LA's Exposition Park, next to USC campus. An 80,000 square foot un-bonded topping slab covers the whole area at the ground level. Upon the engineer's specification, fiber reinforcement was considered in lieu of wire mesh for crack control. TUF-STRAND MaxTen macrofiber was used to provide an improved crack control for this topping slab without the potential for rusting. Construction time was reduced and job-site safety was improved as a result of replacing mesh with fibers.