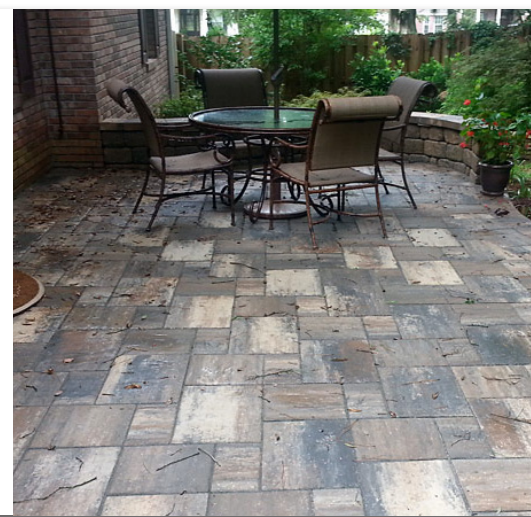
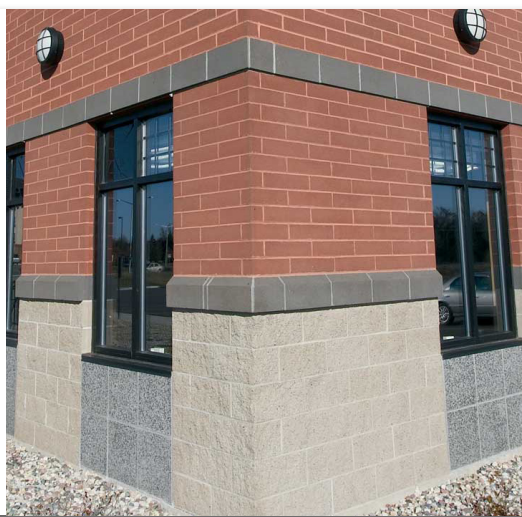




**EUCLID** CHEMICAL

# **ADMIXTURES**

## FOR MANUFACTURED CONCRETE PRODUCTS



PLASTICIZERS

EFFLORESCENCE-CONTROL

INTEGRAL WATER REPELLENTS

CONCRETE/MORTAR SET MODIFIERS

# ADMIXTURES

## FOR MANUFACTURED CONCRETE PRODUCTS (MCP)

### A FULL RANGE OF SOLUTIONS TO MEET YOUR DAILY NEEDS

Manufactured concrete products serve a wide variety of structural and architectural applications, and play an important role in the construction industry supply chain. While design efficiency, economy and dependability ensure their popularity, it is up to the individual manufacturer to meet these expectations on a consistent basis.

The Euclid Chemical Company has been providing economic solutions to concrete production challenges for over 100 years. Our industry experience, and field attention to detail assures that our products are developed with you, the producer in mind. We market these unique admixtures under the EUCON brand name. Within this product line we offer a series of custom plasticizers, efflorescence-control agents, integral water repellents, and set modifiers. Used individually or as system components – Euclid Chemical can design a solution for all of your production needs.

### PLASTICIZERS

The products within this lineup vary based on materials in use, desired surface texture, and targeted performance. Each of them is formulated to improve your bottom line.

#### EUCON FOR-CAST N

Based on cement and pigment dispersing chemistry, EUCON FOR-CAST N improves production rate, consistency, and overall uniformity without altering normal surface characteristics. EUCON FOR-CAST N improves edge and corner definition, handling strengths, and works well with all MCP admixture types.

#### EUCON FOR-CAST S

Improves cement wetting and productivity while imparting an attractive swipe texture on machined concrete surfaces. EUCON FOR-CAST S improves green strength, adds edge and corner definition, and reduces wear of product forming parts.

#### EUCON FOR-CAST SC

Similar in performance to EUCON FOR-CAST S in a more highly concentrated formula. It is particularly useful for fines deficient mix designs or wherever a pastier, high swipe texture is desired.

#### EUCON FOR-CAST SD

Proprietary blend of cement wetting and dispersing chemistries that improves production rate, cement and pigment efficiency, and tightens surface texture through increased density. EUCON FOR-CAST SD is particularly useful in the manufacture of pavers, slabs, and segmental retaining wall (SRW) units, high density/high strength block, dry-cast pipe, and extruded hollow-core slabs.

### EFFLORESCENCE CONTROL ADMIXTURES

Efflorescence Control Admixtures disrupt the migration of soluble salts within the pore structure of masonry materials, and mitigate their unsightly appearance. They are also very useful in meeting various ASTM-driven absorption and durability criteria by product type.

#### EUCON HYDRAPEL

Latest generation high efficiency formulas based on patent-pending silicone polymer technology; EUCON HYDRAPEL admixtures increase mix water tolerance and provide significant gains in density, and productivity. Upon curing, EUCON HYDRAPEL treated concrete products/structures have sharper color, resist water absorption, dry more quickly, and are far less likely to effloresce.

#### EUCON FOR-CAST PE

Special use admixture that inhibits initial movement of calcium hydroxide and other salts by chemically “complexing” with them. Where primary efflorescence is an occasional nuisance, EUCON FOR-CAST PE is an effective safeguard that also provides plasticizing benefits. Use with EUCON HYDRAPEL, PAVERTITE PLUS, or BLOCKTITE to combat primary and secondary efflorescence.

#### EUCON PAVERTITE PLUS

Developed for paver, SRW, cast stone, and roof tile production; EUCON PAVERTITE PLUS reduces absorption and adds density, compressive strength, color integrity, and secondary efflorescence control.







## INTEGRAL WATER-REPELLENT ADMIXTURES

### **EUCON BLOCKTITE**

Traditional polymer blend used to provide lasting water repellency for concrete masonry construction. EUCON BLOCKTITE-treated walls achieved E-rated (excellent) performance when tested by the National Concrete Masonry Association in accordance with ASTM E514 (extended to 72 hr.)

### **EUCON HYDRAPEL**

These integral water repellents provide added benefits related to the flow and compaction of architectural units. This is particularly beneficial for ground-faced, burnished, or custom profiled units. EUCON HYDRAPEL admixtures are also ideal for the manufacture of machine-made cast stone. EUCON HYRAPEL admixtures have also achieved E-rated (excellent) performance when tested by the National Concrete Masonry Association in accordance with ASTM E514 (extended to 72 hr.)

### **BLOCKTITE MORTAR ADMIXTURE**

Companion product to EUCON BLOCKTITE for use in site-produced masonry mortar; BLOCKTITE MORTAR ADMIXTURE resists moisture migration and is an essential component of the BLOCKTITE WATER REPELLENT ADMIXTURE SYSTEM. Note: For added protection, a silane/siloxane penetrating sealer such as Euclid Chemical's CHEMSTOP WB may be applied to walls constructed of BLOCKTITE-treated block or brick and mortar. Please note that sealer coverage rates will be extended due to the reduced initial absorption of the wall surface.

### **BLOCKTITE-D MORTAR ADMIXTURE**

Powdered version of the above; typically used in dry, pre-blended cements, mortars, and other special cementitious applications. BLOCKTITE-D MORTAR ADMIXTURE has also been qualified for use as a component of the BLOCKTITE SYSTEM for water-repellent specified masonry construction.

## ACCELERATING AND RETARDING ADMIXTURES

### **ACCELGUARD 80/NCA/G3/DSA**

Liquid non-chloride admixtures used to speed strength development of concrete, masonry mortar, and other cement based products.

### **ACCELGUARD STANDARD/HE**

Liquid chloride-based accelerating admixture used for rapid strength development of concrete where little or no high-temperature curing is available, or where extremely short curing cycles are required.

### **EUCON WINTER ADMIXTURE**

Multipurpose chloride-based liquid admixture used to accelerate the setting time of masonry mortar.

### **EUCON WINTER MIX POWDER**

Chloride-based powdered admixture formulated to accelerate the setting time of masonry mortar.

### **EUCON RETARDER 100-M**

Admixture used to extend the board life and setting time of masonry mortars and other cementitious materials.



## INDUSTRY LEADERSHIP

For more than a century, The Euclid Chemical Company has served as a leading supplier to the concrete and masonry industry offering a full line of engineered concrete admixture and construction products marketed under the EUCCO brand name. These products include concrete admixtures, block and masonry additives, curing and sealing compounds, epoxy adhesives, floor and wall coatings, structural grouts for columns, equipment and machinery, joint fillers and repair products. The Euclid Chemical Company strives to bring innovative technologies and products to the concrete market with industry leading customer service.

## CUSTOMER SOLUTIONS

The Euclid Chemical Company is unique in our offering of superior products, unparalleled customer service and industry support. The Euclid team delivers a range of value-added resources and in-depth industry experience to architects, designers, engineers, building contractors and owners. Comprised of highly trained professionals who are available in local offices across the Americas, our experts are active members on industry technical committees including American Concrete Institute (ACI), International Concrete Repair Institute (ICRI) and American Society for Testing and Materials (ASTM). Our experienced field team is available to support you and your projects using Euclid Chemical solutions and products manufactured under the stringent standards of our ISO 9000:2008 certified quality system. The Euclid Chemical Company works hand-in-hand with customers:

- supplying field evaluations, recommendations and application problem-solving on a project-by-project and technology basis.
- assisting in product selection, specification, installation and related technology.
- attending pre-design meetings, assisting in clarifying specifications and recommending product selection.
- supporting you by providing proper pre-installation instructions and methods for achieving quality results.

## LABORATORY SERVICES

Our world class Cement and Concrete Reference Laboratory (CCRL) inspected facilities are equipped with state-of-the-art technologies and staffed by an exceptional team of professional, ACI certified technicians. These outstanding resources provide The Euclid Chemical Company the capability to offer comprehensive analytic and petrographic evaluation and testing services via programs that conform to the standards prescribed by the American Society for Testing and Materials, the U.S. Army Corps of Engineers (USACE), the American Concrete Institute and the International Concrete Repair Institute.

## TRAINING

The Euclid Chemical Company generously shares product information and technical knowledge through training and seminars conducted for project owners, contractors, distributors and design professionals. Many programs are AIA/CEU registered, allowing eligible attendees to earn professional development hours. Euclid Chemical is proud to sponsor these opportunities for our associates and colleagues as part of our ongoing commitment to the concrete construction industry.

## BUILDING GREEN

The Euclid Chemical Company offers an extensive line of green products that are specific to LEED guidelines. The LEED (Leadership in Energy & Environmental Design) Green Building Rating System provides a national standard for defining an environmentally friendly, sustainable "green" building. Points awarded to building projects based on water savings, energy efficiency, materials and indoor environmental quality.



**EUCLID CHEMICAL**

19215 Redwood Road  
Cleveland, OH 44110  
t 800-321-7628  
f 216-481-7072

**B106 ADMIXTURES FOR MCP** © 2016 The Euclid Chemical Company. This material is provided for informational purposes only. The Euclid Chemical Company expressly disclaims any liability relating to the use of this material. Nothing stated herein shall give rise to or constitute any warranty by The Euclid Chemical Company, express or implied, including but not limited to any implied warranty of merchantability or fitness for a particular purpose. The information provided in this material is not intended to be all inclusive, as the manner in which any product is used or handled may involve other or additional considerations that are not addressed herein.