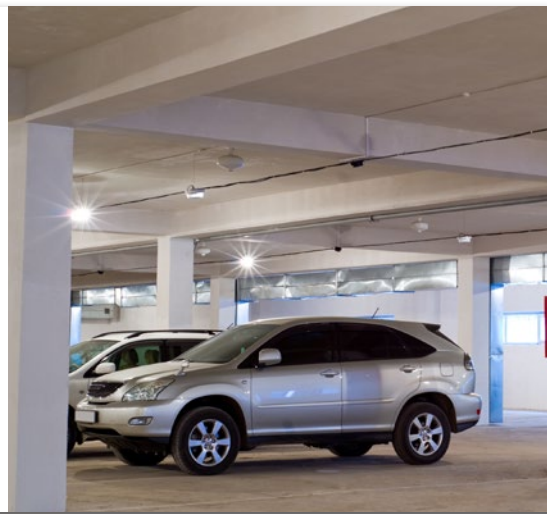




EUCLID CHEMICAL

PARKING FACILITIES

REPAIR SOLUTIONS



CONCRETE REPAIR MATERIALS

CATHODIC PROTECTION

TRAFFIC DECK OVERLAYS

ARCHITECTURAL WALL COATINGS

WATERPROOFING PRODUCTS

REPAIR SOLUTIONS

CONCRETE REPAIR AND PROTECTION FOR PARKING STRUCTURES

Whether your parking facility is precast, cast-in-place, or post-tensioned construction, Euclid Chemical offers complete solutions for concrete repair and protection. As unique as your repair or project demand may be, Euclid Chemical systems will proactively protect your investment from the expensive and damaging effects caused by:

- Water leakage through cracks and joints
- Chloride ingress
- Pollution
- Freeze thaw cycling
- Wearing from repetitive traffic patterns
- Typical mechanical movement that causes spalling, reinforcement corrosion and other distress

New construction and repair applications include traffic and parking deck coatings, penetrants and overlays, stairwell repair and coatings, joint sealants, surface repair and corrosion protection in commercial, retail, institutional and multiresidential parking facilities and parking lots. Euclid Chemical systems are engineered to eliminate costly repair downtime and get your facility back to full operation effectively and efficiently.

BUILDING GREEN

The Euclid Chemical Company offers an extensive line of products that are specific to LEED (Leadership in Energy & Environmental Design) guidelines. The LEED Green Building Rating System provides a national standard for defining an environmentally friendly, sustainable “green” building. Points are awarded to building projects based on water savings, energy efficiency, materials and indoor environmental quality.

INDUSTRY LEADERSHIP

The Euclid Chemical Company is unique in our offering of superior products, and unparalleled customer service and industry support. The Euclid Chemical team delivers a range of value-added resources and in-depth industry experience to architects, designers, contractors and building owners.

Comprised of highly trained professionals in local offices across the Americas, our experts are active members on industry technical committees including the American Concrete Institute (ACI), International Concrete Repair Institute (ICRI) and American Society for Testing and Materials (ASTM). Our experienced field team is available to support you and your projects using Euclid Chemical solutions and products manufactured under the stringent standards of our ISO 9001:2008 certified quality system.

VALUE ADDED SUPPORT

TECHNICAL SUPPORT

Our Technical Support group provides real-time solutions regarding product and application questions. We can be reached toll free at 1-800-321-7628 or you can visit our website at www.euclidchemical.com.

LABORATORY SERVICES

Our world-class Cement and Concrete Reference Laboratory (CCRL) inspected facility is equipped with state-of-the-art technologies and staffed by an exceptional team of professional ACI certified technicians.

TRAINING

The Euclid Chemical Company generously shares product information and technical knowledge through training and seminars conducted for project owners, contractors, distributors and design professionals.



PARKING FACILITIES

REPAIR SOLUTIONS

TRAFFIC DECK SYSTEMS

Flexolith ^① ^⑥

Heavy-duty epoxy overlay system for ramps, helixes, and other high traffic areas.

Tammsdeck ^① ^⑥

Waterproof, elastomeric urethane membrane offering high wear and abrasion resistance for driving lanes and parking stalls. This fast setting system allows for a quick return to traffic.

Flexdeck ^① ^⑥

Waterproof, lightweight, urethane/epoxy system that utilizes a flexible, waterproof urethane membrane and a high strength, abrasion resistant epoxy wearing surface.

Dural 50LM ^① ^⑥

Ultra low viscosity low modulus epoxy used for sealing concrete and grouting cracks. It can be gravity fed or pressure injected.

RAPID SET PATCH AND REPAIR

VersaSpeed 100 ^②

Multifunctional rapid setting fiber reinforced patching and repair mortar ideal for indoor or outdoor applications in cold or hot weather at thicknesses ranging from 1/4 to 6 inches (6mm - 152mm) depth.

EucoRepair SCC Fast ^②

Fast setting, self-consolidating mortar designed for horizontal and formed vertical and overhead structural repairs from 1 inch to full depth. Shrinkage compensated, polymer and micro-fiber modified, with integral corrosion inhibitor.

Speed Crete Red Line ^⑤

Fast setting, cement-based patching material for concrete and masonry designed to reach final set within 20 minutes. Speed Crete Red Line can be shaved to conform to the area of placement on vertical and overhead applications without forms.

Speed Crete PM ^⑤

Ready-to-use, one-part, polymer modified, cementitious-based concrete and masonry patching material for vertical and overhead repair that contains a migratory corrosion inhibitor.

PENETRATING SEALERS

Barcade Silane 100 C ^④

Pure silane sealer that protects concrete exposed to high levels of salt, moisture, and freeze-thaw conditions.

Barcade Silane 40 ^④

Solvent based, 40% silane water and salt repellent for horizontal and porous vertical surfaces.

Barcade Silane 40 WB ^④

Water based, 40% silane water and salt repellent for horizontal and porous vertical surfaces.

Barcade WB 244 ^④

Water-based silane/siloxane blend used to protect horizontal concrete surfaces against water and salt damage.

CATHODIC PROTECTION

Sentinel Galvanic Anodes ^②

Innovative, v-notch configured self-generating cathodic protection system that is easy to install and fits any size rebar. Sentinel Galvanic Anodes mitigate the corrosion of reinforcing steel in concrete structures and promotes the longevity of the concrete by minimizing the spalling and cracking that result from corrosion.

EPOXY BONDING/ANCHORING AGENTS

Duralprep A.C. [▲] ^②

High performance bonding agent and anti-corrosion coating ideal for bonding fresh concrete to existing concrete, and repairing and restoring concrete surfaces. Duralprep A.C. provides an anti-corrosion coating when applied directly to steel reinforcement.

Dural 452 Epoxy System ^⑥

Epoxy adhesive used for bonding, anchoring, and repair of cracks in concrete. Dural 452 is available in low, medium, and gel viscosities.

JOINT FILLERS AND SEALANTS

Eucolastic 1NS, 1SL [▲] ^⑥

Polyurethane joint sealants available in non-sag and self-leveling consistencies with excellent movement properties and fast cure times.



STRUCTURAL & SURFACE REPAIR

EucoRepair V100 ② ⑤

One-component, fast-setting, very low shrinkage repair mortar fortified with polymers and fiber reinforcement used for vertical and overhead repairs requiring high performance.

Euconcrete Supreme ▲ ②

High performance, rugged form and pour repair mortar with an extended working time that is ideal for large or small jobs.

Euco QWIKstitch

Fast-setting urethane used to mend cracks and fill spalls with a traffic-ready time of only 30 minutes.

Concrete-Top Supreme ▲ ⑥

One-part, latex and microsilica modified cementitious mortar designed for horizontal concrete repairs at thicknesses of 3/8 to two inches (10mm - 50mm).

Thin-Top Supreme ▲ ⑥

One-part, latex and microsilica modified cementitious mortar designed for use as a floor or deck topping at thicknesses of 1/16 to 3/8 inch (1.6mm - 10mm).



WATERPROOFING PRODUCTS

Vandex Super ⑦

Cementitious coating that provides negative or positive side waterproofing through a crystallization process. After application, crystals block capillaries and minor shrinkage cracks to prevent water ingress.

Tamoseal ⑦

Cement-based, polymer modified waterproofing coating for above and below grade concrete surfaces.

Dural Aqua-Dam ⑦

Urethane-based chemical grouts used to inject cracked concrete and prevent water from entering buildings, above or below grade.

Speed Plug ⑦

A quick setting hydraulic cement compound used to instantly stop running water or seepage leaks in concrete or masonry.

ARCHITECTURAL COATINGS

Euclid Chemical architectural wall coatings provide weatherproofing and aesthetic finishes to concrete and masonry structures.

Tammscoat ③

High build, decorative, water-based acrylic anticarbonation coating used to protect concrete and masonry surfaces. A variety of colors and textures are available.

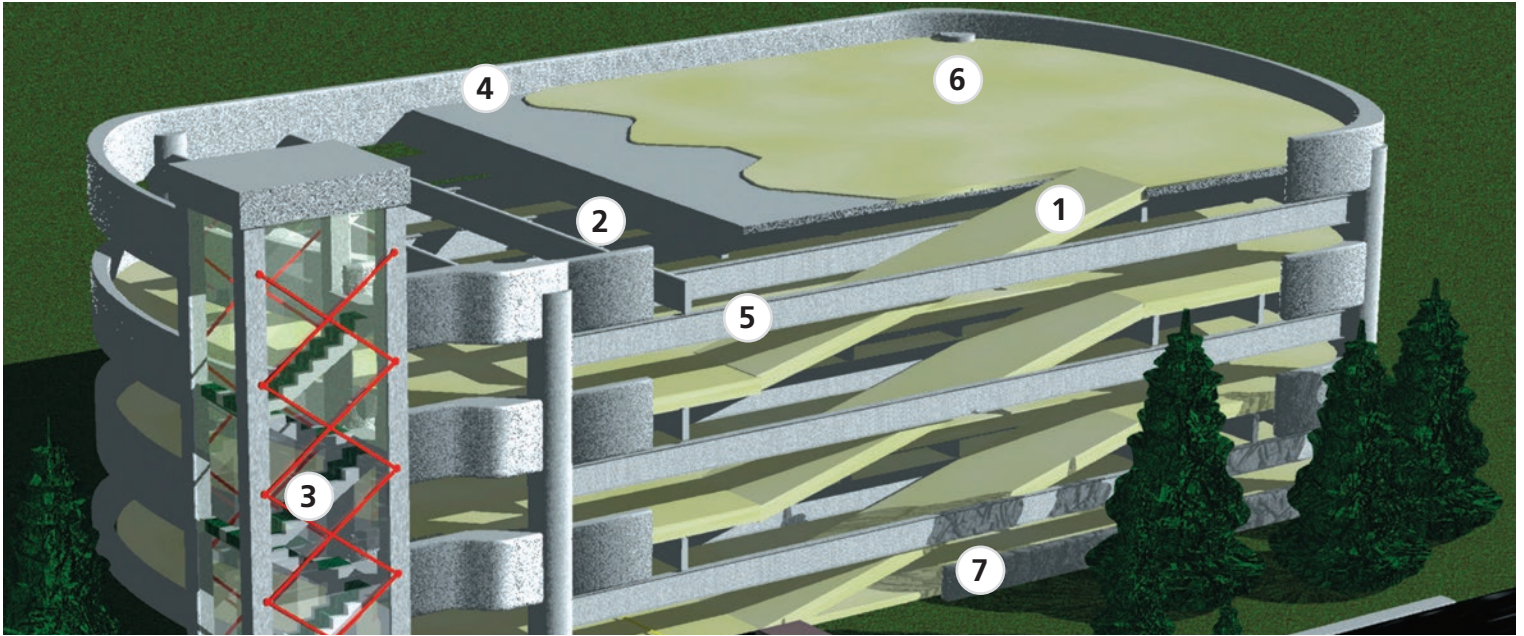
Aquastain T-96 ③

Water-based liquid polymer stain for vertical surfaces.

CURING AND SEALING COMPOUNDS

Euclid Chemical provides a wide array of solutions for curing and sealing concrete. See Euclid's Curing and Sealing brochure for more details.

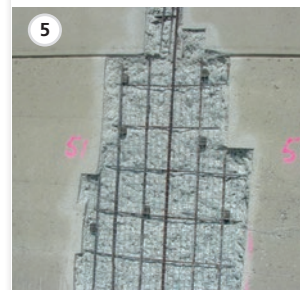
REPAIR SOLUTIONS FOR PARKING FACILITIES



Repair Solution Products

Specific Application of Products

	Columns	Double/Single T's	Facades	Foundations	Helicals	Joints	Parking Decks	Ramps	Stairwells	Toppings/Slabs	Traffic Lanes	Parking Stalls
Traffic Deck Systems												
Flexolith					✓		✓	✓			✓	✓
Tammsdeck							✓	✓			✓	✓
Flexdeck					✓		✓	✓			✓	✓
Dural 50 LM					✓		✓	✓		✓	✓	✓
Rapid Set Patch and Repair												
VersaSpeed 100	✓	✓		✓			✓	✓		✓		✓
EucoRepair SCC Fast	✓	✓		✓			✓					
EucoRepair V100	✓	✓	✓	✓					✓			
Speed Crete Red Line	✓	✓	✓	✓					✓			
Speed Crete PM	✓		✓	✓					✓			
Penetrating Sealers												
Barcade Silane 100 C	✓	✓	✓		✓		✓	✓	✓	✓	✓	✓
Barcade Silane 40	✓		✓		✓		✓	✓	✓	✓	✓	✓
Barcade Silane 40 WB	✓		✓		✓		✓	✓	✓	✓	✓	✓
Barcade WB 244	✓				✓		✓	✓	✓	✓	✓	✓
Cathodic Protection												
Sentinel Galvanic Anodes	✓						✓	✓				
Epoxy Bonding/Anchoring Agents												
Duralprep A.C.	✓	✓			✓		✓	✓	✓	✓	✓	✓
Dural 452 Epoxy System	✓	✓		✓	✓		✓	✓	✓	✓	✓	✓
Joint Fillers & Sealants												
Eucolastic 1NS, 1SL						✓						
Structural & Surface Repair												
EucoRepair V100	✓	✓	✓	✓					✓			
Euocrete Supreme	✓		✓	✓			✓	✓	✓			
Verticoat Supreme	✓	✓	✓	✓					✓			
Concrete-Top Supreme										✓		
Thin-Top Supreme										✓		
Euco QWIKstitch							✓	✓	✓	✓	✓	✓
Waterproofing Products												
Tamoseal				✓								
Vandex Super				✓								
Dural Aqua-Dam				✓								
Speed Plug				✓								
Decorative Coatings												
Tammscoat	✓	✓	✓						✓			
Aquastain T-96	✓	✓	✓						✓			
Cure & Seals												
Various	See Euclid's Curing & Sealing Brochure for Products & Applications											



PROVEN. CONCRETE. SOLUTIONS.

A WORLD OF QUALITY CONCRETE PRODUCTS

For over 100 years, **The Euclid Chemical Company** has manufactured top quality products formulated to meet the demands of the ever changing concrete and masonry construction industry. Marketed under the Euco, Eucon, Eucon, Dural, Speed Crete, Increte, Vandex, Sentinel, Tuf-Strand, and Tamms brand names, Euclid Chemical serves the global building market as an ISO 9001:2008 supplier of specialty products and support services.

The Euclid Chemical Company philosophy of “demonstratively better” is the foundation upon which Euclid Chemical serves and supports its customers. Cutting edge research and development, technical support and service, and an education-driven specification effort along with ongoing customer training provides Euclid Chemical customers with the best products and support in the industry.

Marketed through a network of over 1,200 distributors, ready-mix producers and masonry suppliers, Euclid Chemical products are recognized as the industry standard throughout the world.

As part of our commitment to helping promote sustainable design, Euclid Chemical has many products which contribute to Leadership in Energy and Environmental Design (LEED™) certification. Yet this commitment does not stop at the manufacturing level. Our employees constantly strive to improve the social and environmental impact of company activities while achieving an economic balance.

For information call 1-800-321-7628 or visit www.euclidchemical.com.



EUCLID CHEMICAL

19215 Redwood Road
Cleveland, OH 44110

t 800-321-7628

f 216-481-7072

B23 Repair Solutions for Parking Facilities © 2022 The Euclid Chemical Company. This material is provided for informational purposes only. The Euclid Chemical Company expressly disclaims any liability relating to the use of this material. Nothing stated herein shall give rise to or constitute any warranty by The Euclid Chemical Company, express or implied, including but not limited to any implied warranty of merchantability or fitness for a particular purpose. The information provided in this material is not intended to be all inclusive, as the manner in which any product is used or handled may involve other or additional considerations that are not addressed herein.